

PHILADELPHIA PRESBYTERIAN CHURCH

351 Morrow Road, Forest Park, GA 30297 - PO Box 871028, Morrow, GA 30287

THE CROSSROADS

PASTOR:

Rev. Jeanne Simpson

PHONE:

404-366-1851

PASTOR E-MAIL:

revjeannesimpson@gmail.com

SECRETARY E-MAIL:

secycppc@bellsouth.net

WEBSITE:

ppc-usa.org

**A light in the community
that brings all people to
God through Christ
centered worship and
ministry and nurtures their
faith in order to
extend His kingdom.**

Inside this issue:

Prayer List / Babb Project	2
Birthdays & Anniversaries	2
Thank You's	2
PW Corner/Clerk's Report	3
Workdays/Craft Group	3
Souper Bowl	3

Well, we survived Advent and Christmas, almost. We celebrate Epiphany January 4, when the wise men came. We tend to merge all the different gospel stories into one narrative, including the almost immediate arrival of the wise men, but in fact, Jesus was about 2 years old when they came. We know that from Herod's decree that all the boys 2 and under in Bethlehem were to be killed. The wise men came to him first in Jerusalem asking where the new king of the Jews was, and he went into a rage about that. And these men weren't kings, even though we sing "We Three Kings" with great gusto. They were astrologers and seers who read the constellations and star movements. There was a new "star" – which in fact may have been a comet, and that's what set them off on their journey.

It's been a hard road for a number of us in the church the last couple of months – the death of my husband Jim, and Pam Langley; shoulder surgeries and issues; broken ribs; back procedures; broken arms; cancer treatments; and numerous falls. We are a wounded congregation, both physically and emotionally. And on top of that, it's winter with cold winds and early darkness.

And yet, you gave and gave and gave – to Babb, Securus House, Good Shepherd, Calvary Refuge, and national PC(USA) mission programs. And our small but mighty band of folk came together to celebrate our 200th anniversary with almost 200 people present! Thank you for all you do, in spite of various trials and tribulations. And remember, we've just passed the shortest day of the year, so light is coming – both daylight and the light of Christ!

So get yourself some hot chocolate, start a fire in the fireplace or plug in the space heater, put on your favorite thick socks, and take some time to read a favorite book and ponder your blessings in the new year. You are loved.

Jeanne

THIS MONTH'S BIRTHDAYS

11/ Debbie Durden
21/ Tom Murphy
22/ Becky Huie

THIS MONTH'S ANNIVERSARIES

1/ Darrell & Frances
Youngblood
13/ Elizabeth & David Truex
22/ Jim & Nancy Phillips

THIS MONTH'S USHERS

Jim Phillips
Tom Murphy
Cathy Morris

TO BE REMEMBERED IN PRAYER AND WITH CARDS (new info in bold)

Please notify us concerning new info and updates. Inquiring minds – and prayerful hearts – want to know!

12/14 Barbara Barlow – broken arm. Currently at Pruitt Rehab – no visitors please
12/14 Tabatha Cantrell (Jennifer & Fred's niece) 7mm kidney stone waiting for surgery
11/16 Greg Durden—recovering from ablations on back due to pain
11/23 Tammy Espe (Fran & Darrell's daughter) chemo therapy for stomach cancer
11/10 Jeff Foster (Debbie & Dinah's brother) –chemo treatments continuing
11/10 John Randolph – metastatic bladder cancer
11/16 Fred Rohrbach Sr— physical therapy for rotator cuff surgery
12/14 Tom Smith – fell and broke 2 ribs
11/14 Serena Staats – physical therapy for rotator cuff surgery

Please pray for the AA Participants meeting at our church

OUR HOMEBOUND: *Please refer to the Church Directory for contact information*

Nell Cates Patty Boone Becky Huie Ann NeSmith

Prayer Request: Call 404-366-1851, Email secypcc@bellsouth.net or call a Session member or Shepherd.

Babb Project Report

Thank you to everyone who has supported the Babb Project thru out the past few years. Because of your generosity, we are able to supply weekend food bags for 13 homeless students. In October we spent \$232.88 on purchasing food items and in November we spent \$270.91 as well on purchasing food items. In December we presented the students with Christmas gifts—warm hoodies and scarves in addition to the food that was purchased.

We are always in need of **food items** that we give the students each week. **Breakfast Items:** Individually wrapped cereal, Pop tarts, Cereal bars, Granola bars, Nutri-grain bars, Individual ready to serve cups of Grits or Oatmeal, etc. **Lunch Entrees:** (in microwavable containers) Ravioli with Meat Sauce, Spaghetti O's with Meatballs, Individually wrapped Mac and Cheese, Vienna Sausages, Beef stew, Red Beans and Rice, Beans and Franks, Beef a Roni, Soup, Corn Beef Hash, Ramen Noodles, etc. Juice Boxes, Milk Boxes (in pourable containers & shelf-safe) **Snacks:** Dried or canned fruits, fruit chews, peanut butter crackers, cheese crackers, goldfish, pudding or jello cups, mini microwave popcorn, etc. in individually wrapped bags. **Monetary Gifts** are also welcomed. Make you check payable to PPC and mark it for the Babb Project. Thank you to all who are able to come by on Wednesdays to help fill the bags and deliver them to the school. **See Debbie Durden for details.**

*Thank you to all my Philadelphia Church Family
for the wonderful gift as we celebrate my retirement on December 31. I must admit it has been difficult to say goodbye to all of you. You welcomed me since that August day in 2009. I am so glad the Lord lead me to be your Church secretary. As we have worked together over these years, I referred to Philadelphia as my church where we together loved God and loved people.*

May God bless you all,

Cindy Adair

Dear Philadelphia Congregation,

You have once again shown just how generous you are. From Oct. 1, 2025– Dec. 17, 2025, we were able to give to Securus House a total of 1,773 items which totaled to \$2,291.59 in value. Many thanks to each of you who contributed to this important organization.

Connie McWilliams, Community Missions

PW MESSAGE CORNER:

JAN 14—Mary & Martha —7:00pm

JAN 10 —Circle One— 10:30am

JAN 20 — Busy Bees—10:30am



This year's Super Bowl luncheon and Chili Cook-off is on Sunday, February 8, 2026 which is the actual day of the Super Bowl. If you don't wish to enter the cook-off but will still be joining us for lunch, please consider bringing side dishes, dessert, or drinks. You may find the signup sheet in the narthex. **Thomas Thigpen, CE & Fellowship**

FOOD DRIVE

We are accepting soups, canned goods, and non-perishable items to be donated to a local food pantry during the months of January & February. If you wish to make a monetary donation, make your check payable to Philadelphia Presbyterian Church and mark it for Super Bowl/Food Pantry.

Connie McWilliams, Community Missions.

9:30am on Tuesday, January
6th @ Egg's Up, Morrow.
See you there!

**Craft Group**

Dates to be announced.

PPC Clerk's Corner

Greetings from the Clerk of Session,

Happy New Year!!! So many people, including myself, often set goals for things they want to change/improve in their life. Those goals can be physical, financial, mental, or spiritual goals. I usually find myself setting goals in each of those areas. As a church, we set goals, too. The Session will meet in January to review over the calendar for 2026 as well as additional items. We will install our new elders on January 11th and our retreat will be on January 24th.

Now down to business. The Session held its monthly meeting on Tuesday, December 16, 2025. We met via Zoom. For the month of November, our financial information was as follows:

Total Assets—\$88,130.69

Monthly Identified Offerings—\$7,958.00

YTD Identified Offerings—\$127,637.54

Monthly Total Expenses— \$13,666.59

YTD Expenses—\$182,612.65

Monthly Surplus/Deficit—(\$2,476.09)-deficit

YTD Surplus/Deficit—(\$15,969.43)-deficit

Happy New Year to each and everyone of you!!! May this year be is filled with joy, laughter, much love and abundance of blessings!!!

Love,

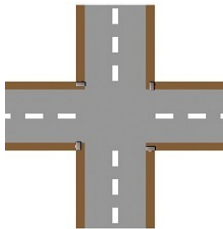
Jennifer

**WORKDAY— 9:00am Saturday,
Jan. 17th @ 9:00am**





Find us on the web
ppc-usa.org



*THE CROSSROADS
PHILADELPHIA PRESBYTERIAN CHURCH
P.O. Box 871028
Morrow GA 30287*